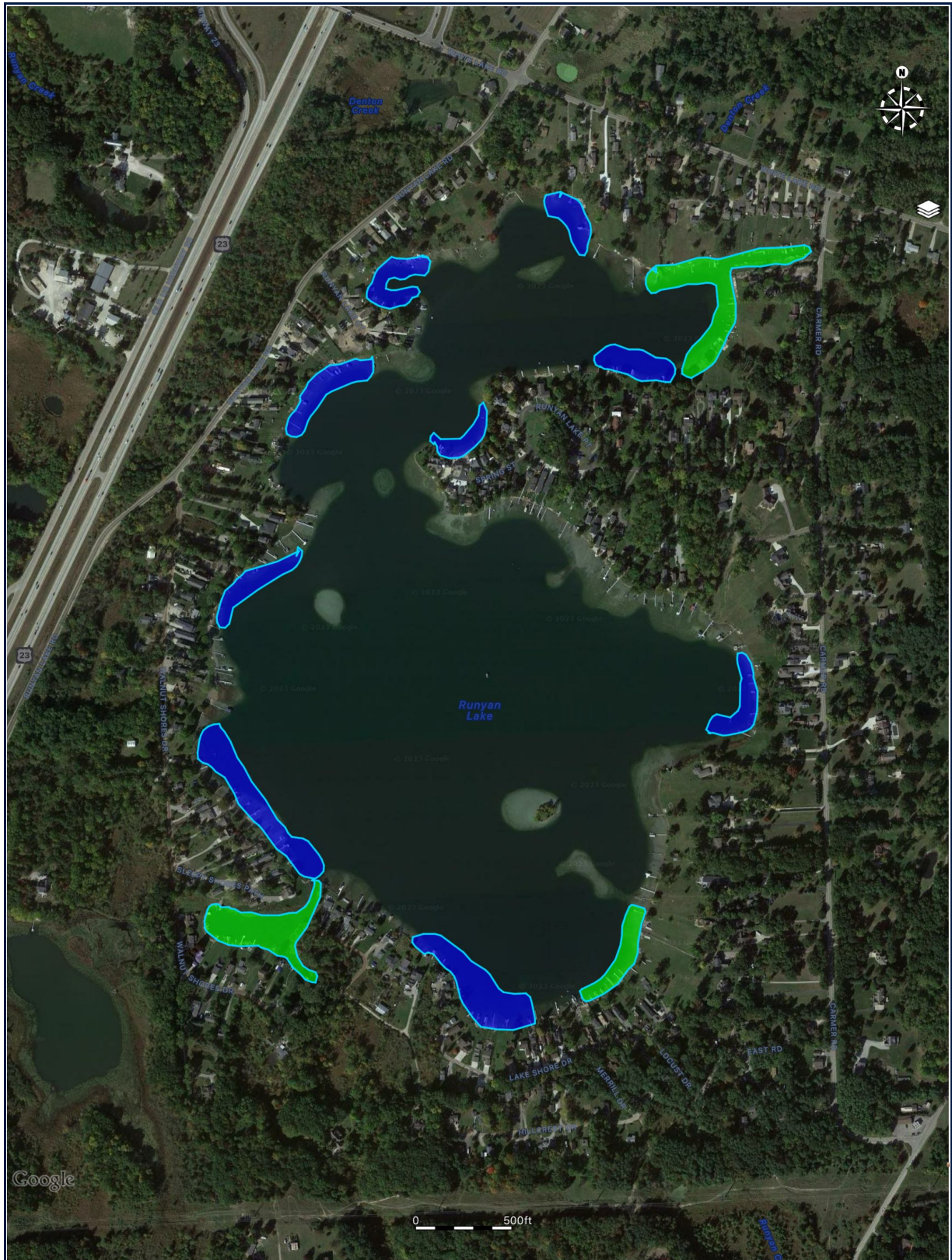


Runyan

Blue areas = Ewm/Curly/Pondweeds/ Macro Algae = 15 acres
Green areas = Starry areas = 5.25 acres



Map points:: runyan

Polygon: Polygon 13
Area: **5.13** acres

Polygon: Polygon 21
Area: **1.48** acres

Polygon: algae
Area: **1.15** acres

Polygon: starry
Area: **3.42** acres

Polygon: cl tl
Area: **5.38** acres

Polygon: Polygon 14
Area: **0.79** acres

Polygon: Polygon 20
Area: **2.69** acres

Polygon: ewm
Area: **1.21** acres

Polygon: starry
Area: **1.18** acres

Polygon: Polygon 18
Area: **2.99** acres

Polygon: tl cl
Area: **1.96** acres

Polygon: Polygon 11
Area: **5.4** acres

Polygon: algae
Area: **1.96** acres

Polygon: ewm
Area: **1.17** acres

Polygon: ewm

Area: **1.21** acres

Polygon: **Polygon 8**

Area: **16.95** acres

Polygon: **Polygon 16**

Area: **5.97** acres

Polygon: **Polygon 10**

Area: **10.38** acres

Polygon: **ewm**

Area: **0.96** acres

Polygon: **algae**

Area: **1.42** acres

Polygon: **ewm**

Area: **2.79** acres

Polygon: **cl tl**

Area: **9.55** acres

Polygon: **Polygon 7**

Area: **10.47** acres

Polygon: **Polygon 15**

Area: **1.57** acres

Polygon: **Polygon 19**

Area: **0.73** acres

Polygon: **ewm**

Area: **1.47** acres

Polygon: **starry**

Area: **2.63** acres

Polygon: **Polygon 15**

Area: **5.01** acres

Polygon: **ewm**

Area: **0.72** acres

Polygon: **Polygon 14**

Area: **6.96 acres**

Polygon: ewm

Area: **2.82 acres**

Polygon: Polygon 22

Area: **2.32 acres**

Polygon: chara tl cl

Area: **9.81 acres**

Polygon: tl cl

Area: **6.45 acres**

Polygon: Polygon 4

Area: **3.4 acres**

Polygon: Polygon 3

Area: **2.88 acres**

Polygon: Polygon 9

Area: **25.01 acres**

Polygon: ewm

Area: **1.09 acres**

Polygon: chara tl cl

Area: **7.15 acres**

Polygon: Polygon 17

Area: **0.26 acres**

Polygon: Polygon 1

Area: **4.07 acres**

Polygon: Polygon 5

Area: **11.37 acres**

Polygon: cl tl

Area: **3.67 acres**

Polygon: Polygon 6

Area: **0 acres**

Polygon: Polygon 24

Area: **1.5 acres**

Polygon: **Polygon 23**

Area: **1.34 acres**